



Alberta A to Z



Communities, places and events across Alberta



Part 1 – A to F

Find the letters on the map. Read about the communities, places and events on pages 2 to 4.

A Alberta Open Sand Sculpture Championships

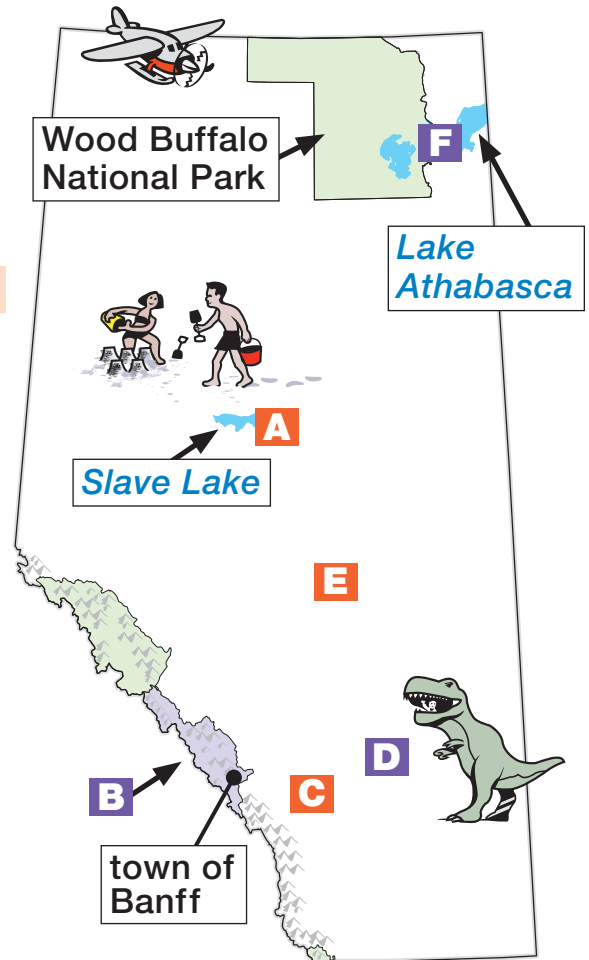
B Banff National Park

C Calgary Stampede

D Drumheller

E Edmonton's Capital EX

F Fort Chipewyan (Fort Chip)



© English Express, Alberta Advanced Education and Technology
May–June 2010



Note: The special feature "Alberta A to Z" previously appeared in the May–June 2005 issue of English Express. The feature was inspired by a series in the Calgary Herald called Alberta A to Z. • Photos—Lesser Slave Lake Regional Tourism: sand sculpture; Travel Alberta: Peyto Lake, hoodoos, chuckwagon race, Capital EX; ©iStockphoto: bighorn sheep (twildlife); Bev Burke: dinosaur skeleton; Alberta Tourism, Parks and Recreation: wolf; Mark Elliot: Fort Chip; Wood Buffalo National Park: wood bison (John McKinnon) • Art: Guy Parsons

A Alberta Open Sand Sculpture Championships



sand
sculpture

This event is in late July. Teams make sand sculptures at a beach at Slave Lake. Some teams win prizes.

You can go to the beach and look at the sculptures. There are special activities for kids too.

B Banff National Park

Banff National Park is in the Rocky Mountains. You can do many activities in the park. For example: camp, hike and canoe.



bighorn
sheep

Watch for wild animals.

Peyto Lake is in Banff National Park.



You must pay a fee to enter national parks.

C Calgary Stampede



The Calgary Stampede is in mid-July. It lasts for 10 days. There are concerts, rides and games. There is a rodeo too.

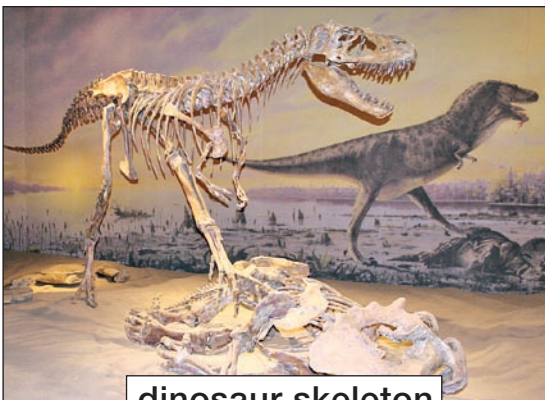
Watch for free music and pancake breakfasts.



chuckwagon race

D Drumheller

Drumheller is a town. It is in the badlands. Dinosaurs lived in this area millions of years ago. You can see dinosaur skeletons at the Royal Tyrrell Museum.



dinosaur skeleton



hoodoo

You can see hoodoos in the badlands.

E Edmonton's Capital EX

Capital EX is a big event. It starts in late July. It lasts for 10 days. You can hear music, play games and go on rides. You can watch the parade too.



F Fort Chipewyan (Fort Chip)

Fort Chip is a small community. About 1,000 people live there. Most are Aboriginal.

Tourists come to the area to see the wilderness.



wolf

Fort Chip is beside Lake Athabasca.



Wood Buffalo National Park

Fort Chip is near Wood Buffalo National Park. It is the largest national park in Canada.

The park is very important to people in the area. Tourists visit the area too. They like to fish, camp and go canoeing.



wood bison (buffalo)