

Visit the Royal Tyrrell Museum

📖 What was life like millions of years ago? You can find out at the Royal Tyrrell Museum. (Say: **teer-ul**)

✓ The museum is near Drumheller, Alberta.

✓ You can see dinosaur skeletons and many other things at the museum.



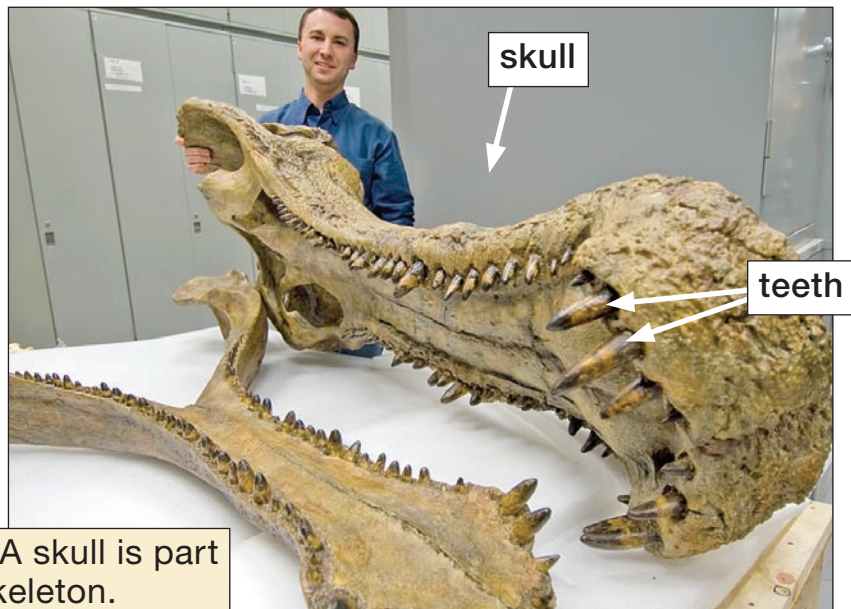
a dinosaur skeleton at the museum

See a SuperCroc skull at the museum

Don't miss the SuperCroc skull! SuperCroc was a huge crocodile.

👉 The skull is about 1.7 metres (6 feet) long. It has more than 100 teeth.

👉 The skull is a replica (copy).



Note: A skull is part of a skeleton.

👉 More on page 2

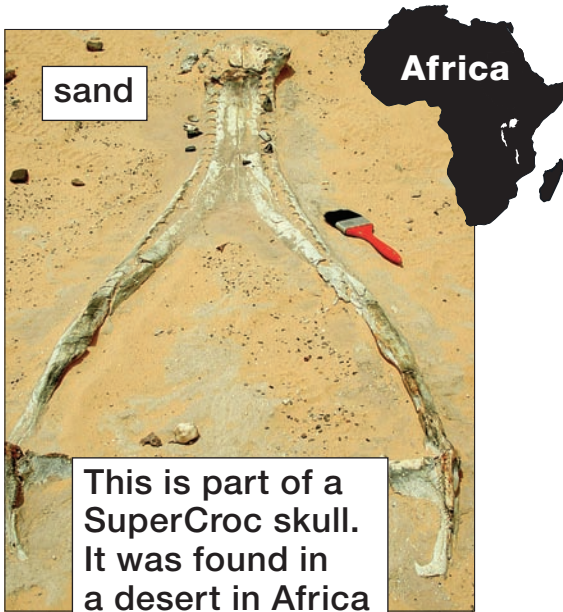
About SuperCroc

When did SuperCroc live?

- ☞ It lived about 110 million years ago.

Where did SuperCroc live?

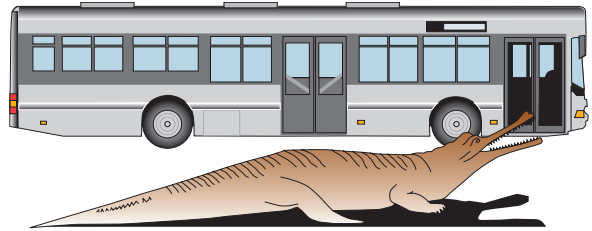
- ☞ It lived in rivers in Africa.



This is part of a SuperCroc skull. It was found in a desert in Africa in 2000.

How big was SuperCroc?

- ☞ It was about 12 metres (40 feet) long. It was about as long as a bus.



How much did SuperCroc weigh?

- ☞ Scientists think it weighed about 8,000 kg (17,600 pounds).

What did SuperCroc eat?

- ☞ Scientists think it ate fish, turtles and dinosaurs.

Adapted from: Calgary Herald; <www.nationalgeographic.com>; <www.tyrrellmuseum.com> • Photos—dinosaur skeleton at museum: Bev Burke; cast of SuperCroc skull: Royal Tyrrell Museum; SuperCroc skull in sand: ©Mike Hettwer, courtesy of Project Exploration • Art—SuperCroc & bus: Calgary Herald (Bruce Full)