

English Express

Teaching Notes

These Teaching Notes accompany the November–December 2009 issue of *English Express*.



Please photocopy these notes.

November–December 2009

Subscriptions—contact Corinna Ruhl

E-mail: subscriptions@englishexpress.ca

Phone: Edmonton 780-440-3722

Outside Edmonton 1-877-440-3722 (free)

Mail: English Express
Box 38028 RPO Capilano
Edmonton AB T6A 3Y6

Fax: 780-468-3119

Content—contact Bev Burke

E-mail: editor@englishexpress.ca

Phone: Edmonton 780-440-9833

Outside Edmonton 1-877-440-9822 (free)

Regions of Alberta: Grassland

Map activities: Use the maps on EE-4 for a variety of map activities. For example:

☞ Have students look at the legend map. Then ask some questions. Which region looks the largest? (Boreal Forest.) Which region do you think you live in? What regions have you visited?

☞ Have students look at the highways on the large map. Then ask some questions. What highway goes through _____? How would you get from _____ to _____?

☞ Have students use the scale at the bottom of the large map. Talk about distances “as the crow flies” vs. via highways. Have students practice figuring out distances. For example, about how far is it from _____ to _____?

☞ Ask questions about where communities are in relation to each other. For example, what community is southeast of Drumheller?

Tip: Keep a set of laminated copies of the Natural Regions of Alberta series for future use. Also, 8½" x 11" PDFs of the series will be available on the website.

Answers for exercises

Reading maps (TN-2) possible answers

1. The Grassland region is yellow.
2. The United States shares a border with Alberta.
3. The Red Deer River goes through Drumheller.
4. Brooks is near Dinosaur Provincial Park.
5. It is about 160 km from Lethbridge to Medicine Hat.

Soccer team saved Thomas's life (TN-3)

1. were
2. heart
3. slumped
4. daughter
5. called
6. nearby
7. began
8. saved
9. took
10. invited

Go snowshoeing (TN-3)

1. hat
2. sunglasses
3. scarf
4. glove
5. jacket
6. pole
7. pants
8. snowshoe
9. boot

True or false (TN-4)

1. F
2. T
3. F
4. T
5. F
6. F
7. T
8. T
9. F
10. T

www.englishexpress.ca



BONUS PAGES on the website

We have included two extra pages of Teaching Notes with blank coupons for students to use. Look under the “Teachers and tutors” section.

Crossword answers (TN-4)

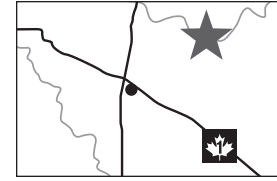


Burrowing owl:
Guy Parsons

Reading maps

Answers on page TN-1

Look at the maps and the legend on page 4 of *English Express*. Then answer these questions. Use complete sentences.



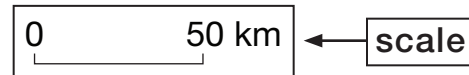
1. What colour is the Grassland region on the legend?

2. What country shares a border with Alberta? _____

3. What river goes through Drumheller? _____

4. What community is near Dinosaur Provincial Park? _____

5. Use the scale at the bottom of the big map.



About how far is it from Lethbridge to Medicine Hat? _____

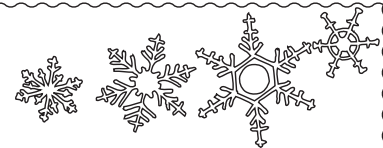
Map: Wendy Johnson

Make a coupon

Coupons are nice gifts for holidays and birthdays. Make a coupon for a friend or family member.



Coupon



To: _____

From: _____

This coupon is good for:

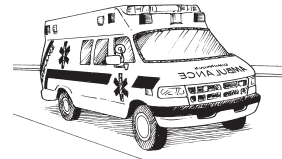
envelope/card: ©iStockphoto.com/dondesigns

Soccer team saved Thomas's life

Answers on page TN-1

Read the story about Thomas on page 1 of *English Express*. Then write the correct word on the line. Use the words in the box.

1. Thomas and his family were on their way home from a trip.
2. Suddenly, Thomas's _____ stopped.
3. He _____ over in his seat.
4. His _____ stopped the van.
5. She _____ 9-1-1. She yelled for help.
6. A women's soccer team was _____.
7. Two women _____ CPR.
8. They _____ Thomas's life.
9. Paramedics _____ Thomas to the hospital.
10. Thomas _____ the soccer team for dinner.



began
called
daughter
heart
invited
nearby
saved
slumped
took
~~were~~

Go snowshoeing

Answers on page TN-1



Art: Nola Johnston

Unscramble the words.

1. ath h a t
2. genssulass _____
3. csraf _____
4. leogv _____
5. tjakec _____
6. olpe _____
7. spnta _____
8. nhoowsse _____
9. boto _____

True or false

Answers on page TN-1

Read about the Grassland region on pages 4 and 5 of *English Express*. Then write T if the sentence is true. Write F if the sentence is false.

- F 1. The Grassland region is the largest natural region of Alberta.
- 2. The Grassland region is the warmest, driest region of Alberta.
- 3. The Grassland region gets lots of snow in the winter.
- 4. A chinook is a warm, dry wind.
- 5. Antelope live in all regions of Alberta.
- 6. The Grassland region has many trees.
- 7. Most of the Grassland region is cropland.
- 8. In this region, some farmers irrigate their land.
- 9. The region has no oil and gas.
- 10. There are badlands in the Grassland region.

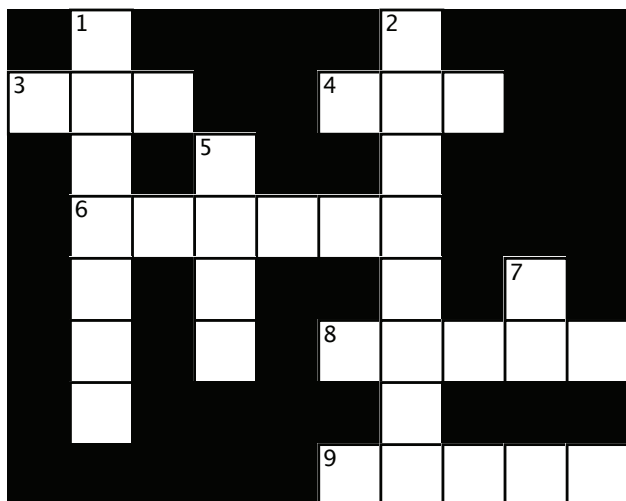


Art: Guy Parsons

Crossword

Answers on page TN-1

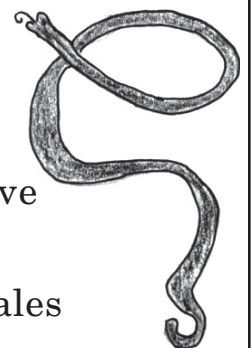
The words in this puzzle are from the reader's story on page 7 of *English Express*.



Art: Ayida Mussa

Across

- 3. Opposite of near
- 4. Opposite of cold
- 6. Between ten and twelve
- 8. Opposite of sad
- 9. A long reptile with scales



Down

- 1. Mother and father
- 2. A large, high hill
- 5. To shout or scream
- 7. Opposite of down

